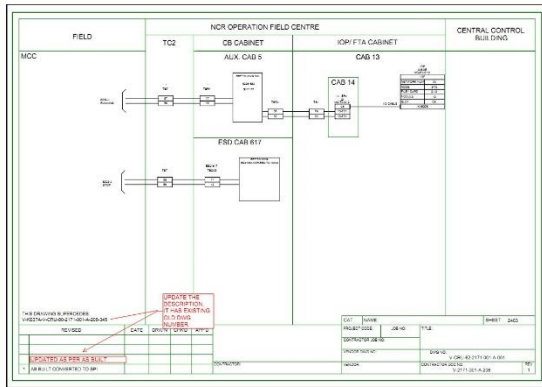


Intergraph Smart Instrumentation Revision

Data Migration and Transformation

Summary

This service provides a solution for the revision of Intergraph Smart Instrumentation drawings and data to match mark-ups resulting from engineering changes or as-building activities.



Sample Enhanced Smart Loop to be revised or modified in Smart Instrumentation

Differentiators

- Extensive Intergraph Smart Instrumentation expertise and experience
- Advanced application knowledge accelerates delivery
- Best practice knowledge and consulting advice

Challenges

The revision of Intergraph Smart Instrumentation drawings and data to match mark-ups is a labour-intensive activity that is often deferred or delayed due to a lack of qualified resources. Such deferrals result in an electronic data set that is increasingly inaccurate and reduces the value of the investment in the technology.

GENERAL	1	Tag Number	101-PT-001	
	2	Service	F-102 TOP	
	3	Location	Field 100-PID01-001	
	4	Function	Indicating Pressure transmitter	
	5	Mounting	2" pipe	
	6	Area Classification	Class 1, Division 2, Groups C & D	
	7	Certification		
	8	Enclosure	Aluminum	
	9			
	PROCESS CONDITIONS	10	Fluid	F-102 VAPORS
11		Pressure Max	Oper: 8 bar-g 5 bar-g	
12		Temperature Max	Oper: 120 °C 120 °C	
13		Oper. Spec. Gravity	Oper: Viscosity	
14				
15				
16		Instrument Range	0-12 bar-g	
17		Calibration Range	500% bar-g	
18		Elevation	Suppression 500% 500%	
19		Element Type	capacitance	
TRANSMITTER	20	Element Material	316 ss	
	21	Body Material	Body Rating Cadmium Plated C.S. 3000 Psi	
	22	Process Flanges Material	ss	
	23	Wetted G-Rings Material	viton	
	24	Fill Fluid	silicon oil	
	25	Bolts	Housing Cadmium Plated C.S. Aluminum	
	26	Paint	Epoxy	
	27	Process Connection	Electrical Connection 1/2" 1/2"	
	28	Flow Rate		
	29	Allowable Temperature		
DIAPHRAGM SEAL	30			
	31	Process Connection & Rating		
	32	Diaphragm Material		
	33	Housing Material		
	34	Fill Fluid		
	35	Capillary Material	Capillary Length	
	36	Capillary Type		
	37	Flushing Connection		
	38			
	39	Integral Meter	Scale Yes 0-100%, Linear	
OPTIONS	40	Hydraulic Testing		
	41	Cleaning		
	42	Mounting Brackets	Yes	
	43			
	44	Communication Type	Hart Protocol	
	COMMUNICATION AND SOFTWARE	45	Communication with:	32.5 Mbytes/sec
		46	Configuration from:	Hand Held terminal
		47	Internal Diagnostics	Yes
		48	Hand Terminal	Yes
		49	Manufacturer:	ROSEMOUNT
50		Model:	3051S1256	
51		Purchase Order Number	QWEST-124598	
52		Item Number	1056-g 44	
53				
54		Serial Number		
Notes:				
INSTRUMENT SPECIFICATION				
Smart Pressure Transmitter				
DT	MC	01/20/1998	Issue for Comment	
9	MS	11/22/1998	For bids	
No.	By	Date	Description	
			Code: 49 Doc. No.: 101-21-133345 Sheet 1 of 1 Rev: 0	

Sample Datasheet to be revised or modified in Smart Instrumentation

Deliverables

Our services may be delivered in an online mode, where our team will remotely access your production software and database minimizing downtime, or offline, with us submitting a revised database snapshot upon completion for more complex projects.

In either mode, the range of data and drawings which may be revised include:

- Instrument index and loop drawings
- Process and instrument data sheets
- I/O lists and instrument field wiring
- Junction box and marshalling cabinet wiring diagrams
- Cable and junction box schedules



Work Process

Our detailed work process varies to suit project requirements; however, the following steps are typical once the input data, drawings and mark-ups are received:

Review mark-ups and update reference data if necessary

Clarify any queries relating to marked-up changes with the client

Incorporate changes into the Intergraph Smart Instrumentation database

Extract reports and snapshot drawings to perform quality checks and corrections

Submit a project backup, reports and drawings to the client for review

Conduct final project handover and production deployment into the client environment

Quality Assurance

TecSurge uses a combination of peer review and automated data and rule checks to verify the quality of our workmanship. A final check involves one-for-one comparison of each completed deliverable against its source, to ensure an accurate and complete reproduction is produced.

In addition, we extract all drawings and relevant reports for review by our client prior to incorporating the new or modified drawings into the production environment, to reduce any risks of misinterpretation and to minimize disruption to ongoing operations.

If this service describes your situation, please [contact us](#) today to discuss your options. Let's talk.

Contact us

info@tecsurge.com

