

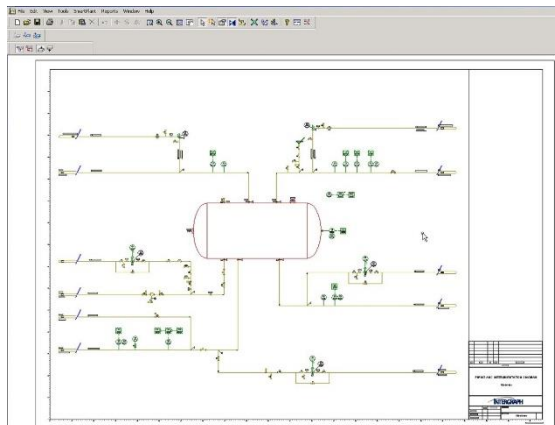


## Intergraph Smart P&ID Revision

### Data Migration and Transformation

#### Summary

This service provides a solution for the revision of Intergraph Smart P&ID drawings and data to match mark-ups resulting from engineering changes or as-building activities.



Revised P&ID example

#### Differentiators

- Extensive Intergraph Smart P&ID expertise and experience
- Advanced application knowledge accelerates delivery
- Best practice knowledge and consulting advice

#### Challenges

The revision of Intergraph Smart P&ID drawings and data to match mark-ups is a labour-intensive activity that is often deferred or delayed due to a lack of qualified resources. Such deferrals result in an electronic data set that is increasingly inaccurate and reduces the value of the investment in the technology.

#### Deliverables

In a typical project, we deliver a project archive or offline workshare data set from Intergraph Smart P&ID containing the revised P&ID drawings and data.

#### Work Process

Our detailed work process varies to suit project requirements; however, the following steps are typical once the input drawings and mark-ups are received:

- Review P&ID mark-ups and update reference data if necessary
- Clarify any queries relating to marked-up changes with the client
- Incorporate changes into the Intergraph Smart P&ID database
- Extract reports and snapshot drawings to perform quality checks and corrections
- Submit a project archive, reports and drawings to the client for review
- Conduct final project handover and production deployment into the client environment

#### Quality Assurance

TecSurge uses a combination of peer review and automated data and rule checks to verify the quality of our workmanship. A final check involves one-for-one comparison of each completed P&ID against its source, to ensure an accurate and complete reproduction is produced.

In addition, we extract all drawings and relevant reports for review by our client prior to incorporating the new or modified drawings into the production environment, to reduce any risks of misinterpretation and to minimize disruption to ongoing operations.



## Getting Started

To estimate the schedule and cost for this service, we typically request the following preliminary information:

### **What is the target software and database version?**

Why: We reproduce the target environment locally to ensure full compatibility with your environment is maintained.

### **What is the target completion date?**

Why: Usually revisions are required within a short time frame. To ensure success, we agree a defined target date for the project completion up-front.

If this service describes your situation, and you're able to provide the engineering inputs and answers to the questions listed here, please [contact us](#) today to discuss your options. Let's talk.

## Contact us

info@tecsurge.com

