



SmartPlant Fusion Implementation

Systems implementation and integration

Summary

Under this service, TecSurge provides the expertise and experience necessary to assist clients in the implementation of Intergraph's SmartPlant Fusion solution. Professional services capabilities typically utilised within implementation projects include Consulting, design, configuration, customer specific software development & testing, training and handover.

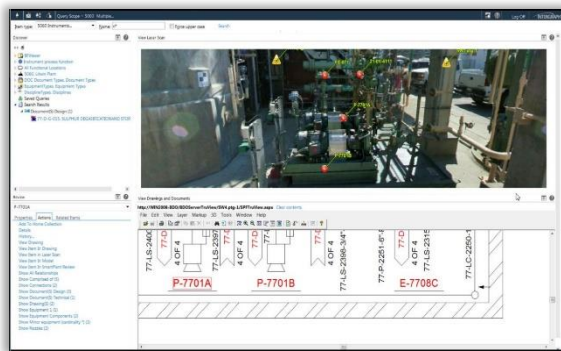
Differentiators

- Intergraph SmartPlant Fusion certified resources
- Extensive product experience including custom development
- Professional project management
- Fixed price, turn-key delivery

Deliverables

Primary deliverables produced under this service include business process diagrams, design and technical specifications, administration and user documentation.

Secondary deliverables include standard project management artefacts such as project plans, schedules, risk, change and issue registers, and project status reports.



SmartPlant Fusion user navigation interface

Work Process

TecSurge's process begins with a review of the standards and numbering systems applicable to the data to be processed by the SmartPlant Fusion solution. These standards document key knowledge about the way in which historical plant data is controlled, numbered and organised. In particular, equipment tagging standards are especially important when identifying and extracting asset references from existing documentation.

Next, source documentation and drawings to be processed by the Fusion solution are reviewed. Typically, such source documentation is contained in a wide variety of file types, including Microsoft Office, Adobe PDF, CAD software such as AutoCAD and MicroStation, and others. The specific types and formats of content that need to be processed has a direct impact on the implementation project, especially if OCR technology is needed to deal with scanned or image-based source data.

Based upon this review, and working collaboratively with the client in structured workshops, TecSurge develops a design which specifies the details of the way in which the solution should be deployed, configured and operated. The design will also incorporate any integrations of the captured data set with other environments or applications.

With the design finalised, a detailed implementation plan is developed, and the technical configuration of the solution begun. Progress is reviewed at key milestones, and rigorous unit testing of the configuration is undertaken.

Once the configuration is completed, training and functional testing are conducted in a collaborative style with the client focal point and technical team, after which the solution is accepted and transitions to an operational status.

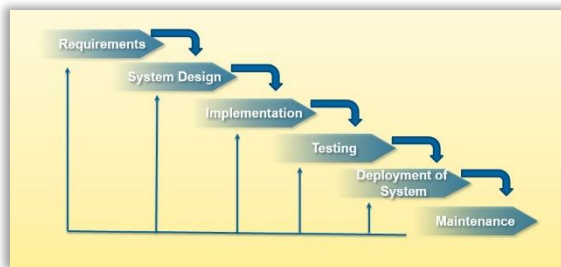
Often, operational use of the system will expose or identify additional areas for optimisation or improvement, based on the actual data being processed. Such opportunities are tracked as changes, and considered for implementation by



the project team based on a standard change control process.

Quality Assurance

TecSurge ensures the quality of the system implementation by following a rigorous process of unit testing and peer review. In addition, challenges identified during project delivery are managed via risk registers and issues communicated clearly with project stakeholders to ensure appropriate mitigation strategies are implemented.



Implementation Workflow

Getting Started

TecSurge is usually engaged by customers who have selected SmartPlant Fusion as a solution to unlock information contained in unstructured information sources.

In order to understand the scope of the work, we ask a series of questions, such as:

- **How many individual plant or facilities will be covered?** Why: This is a key input determining the project effort and duration.
- **What types of source data are expected?** Why: The variety of source formats expected impacts the implementation time.
- **Does the source data include scanned or image format files?** Why: Image-based source files require the implementation of the ABBYY optical character recognition technology.
- **When is your target completion date, and when do you expect to start?** Why: The responses to these standard project management parameters can have a significant impact on the cost due to the prioritisation of work and the manpower required.
- **What systems integrations are required?** Why: The numbers and types of systems integrations required, such as engineering tools and maintenance management systems has a significant impact on cost and schedule.

If this service describes your situation, and you're able to provide the engineering inputs and answers to the questions listed here, [contact us](#) today for a quotation.

Contact us

info@tecsurge.com

