

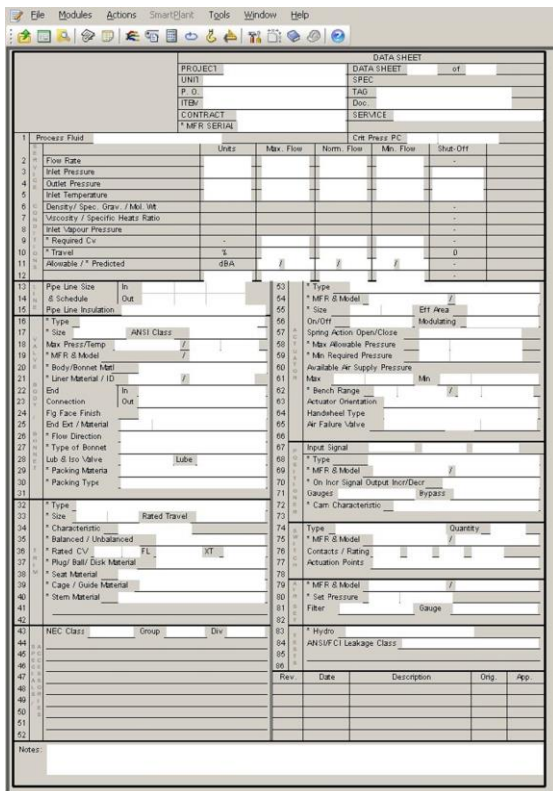


Data sheet Configuration for SPI

Drawings, reports and datasheets

Summary

This TecSurge service delivers customised instrument datasheet forms for SmartPlant Instrumentation (SPI), developed to match industry standards and customer specific requirements.



Example SPI data sheet specification page

Differentiators

- Extensive experience with the SmartPlant Instrumentation application, database and query language
- Technical expertise with the PowerBuilder development environment
- End-to-end solution, inclusive of data updates to

Challenges

The SmartPlant Instrumentation software is delivered with only a single instrument datasheet template which typically requires additions and modifications in order to match project or client requirements.

Customising such templates requires a detailed understanding of the SPI database structure and its database query language. In addition, the development work requires a license and knowledge of the InfoMaker software platform, specialised costs which are difficult to justify with infrequent use. InfoMaker is used to customise datasheets, if more functions are required.

Deliverables

Under this service, TecSurge typically delivers the following:

Datasheet Customisation

- Customised instrument specification page in .psr format¹
- Customised instrument form²
- Field mapping matrix containing the database location of the instrument attribute.

Note:

¹Default deliverable when Intools/SPI DB backup is not required.

²Available only when Intools/SPI DB backup is source and handover format. A form is a collection of instrument pages, such as multiple specification pages, a process page and a notes page.

Work Process

TecSurge's work process for this service consists of the following general steps:

1. Define target format
2. Define field mapping matrix
3. Develop additional views
4. Import specification pages
5. Develop specification form
6. Test
7. Align existing fields (if required)



Quality Assurance

All instrument datasheet specification pages developed are provided together with the mapping report to verify that each property is set correctly. The functionality of the specification is verified by creating test instruments and examining the resulting database records.

Getting Started

In order to estimate the schedule and cost for this service, we require the following information:

What is the quantity of instrument datasheets to be customised?

Why: The quantity of datasheets is directly proportional to the man-hour requirement.

What is the database server and SPI version required?

Why: TecSurge will utilise the identical SPI software version and database platform as the end customer, in order to guarantee a 100% compatible delivery.

If this service describes your situation, and you're able to provide the engineering inputs and answers to the questions listed here, [contact us](#) today for a quotation.

Contact us

info@tecsurge.com

